

Liquid ring vacuum pumps

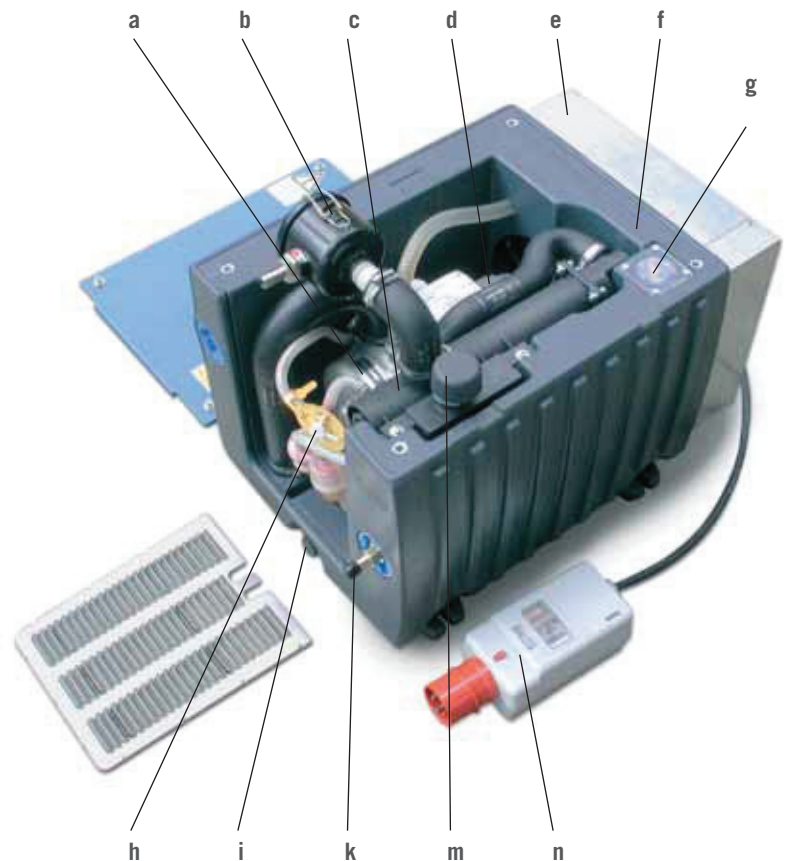
Only one unit for vacuum supply and liquid separation

These robust pumps, are low on wear-and-tear and maintenance, work at up to 50 mbar vacuum and do not need an additional liquid separator.

A fast turning impeller causes water in the pump to rotate (see picture on left) simultaneously sealing itself off the impeller. A washable filter and a patented condenser clean the air being sucked in before it enters the pump. Cooling lubricant is integrated into pump's operating cycle and a valve allows removal of excess fluid which can be returned to tool machine whilst in operation.

An air chiller protects the unit from overheating.

- a Liquid ring vacuum pump
- b Suction filter
- c Condenser
- d Motor
- e Chiller
- f Fluid reservoir
- g Level indicator
- h Operation selection
- i Drain plug
- k Valve
- m Air release valve
- n Shockproof plug



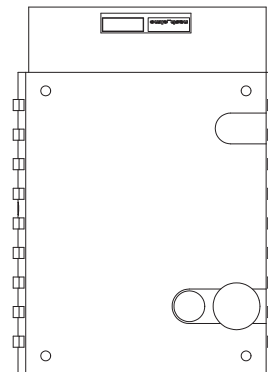
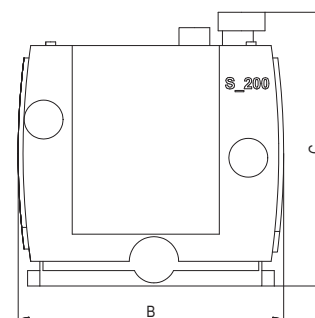
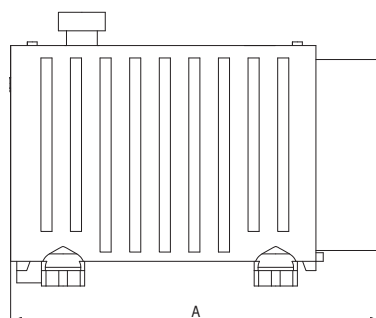
Liquid ring vacuum pump

Nr.	m ³ /h	Volt	End press.	Kw	DB	Hz	A	B	C	kg
93801	22	400	150-50mbar	0,83	66	50	463	432	602	45,5
93802	45	400	150-50mbar	1,2	70	50	515	572	743	57
93803	65	400	150-50mbar	2,4	74	50	515	572	743	72
93804	100	400	150-50mbar	3,85	77	50	525	620	920	110
93805	150	400	150-50mbar	4	74	50	710	845	1100	200
93806	198	400	150-50mbar	5,5	76	50	710	845	1100	220
93807	232	400	150-50mbar	7,5	73	50	710	845	1100	240



Supply includes

- 1 pce connection unit comprising:
- 2m vacuum hose
- 3/2 way aerated valve
- 1 vacuummeter



Liquid ring vacuum pump – Accessories

Nr.	Description	for pump	Version	kg
13468	Air filter element 3µm, polyester	Type 22	Washable	79
13469	Air filter element 3µm, polyester	Type 45-100	Washable	330
13470	Air filter element 3µm, polyester	Type 150-198	Washable	368
13471	Air filter element 3µm, polyester	Type 232	Washable	480
13534	Water filter (exchange in pairs)	Type 232	Washable	40



All vacuum pumps can be used with 60 Hz